

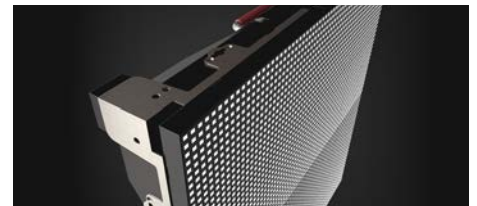
PERFORMANCE 500

The versatile flat display designed to light up the outside world.

- Outdoor
- Multiple Formats
- 3.1-10mm Pixel Pitch
- High Brightness
- Rapid Deployment
- SMD LED

Energize your environment with outstanding outdoor canvases with uncompromised flexibility and durability. Performance Series™ display from NanoLumens is built to be astonishingly bright and robust, and outperform substitute models in quality and reliability at a surprisingly accessible price point. Displays in this series range in pixel pitch from 3.1mm to 10mm and can be designed to meet any size or shape.

Designed and tested to exceed IP65, Performance Series™ products stand up to all types of outdoor conditions without the need for internal environmental controls. Backed by our industry-leading six-year warranty, Performance Series™ displays give you the power and performance to transform any outdoor space!



Why Nanolumens

At NanoLumens, we've set our sights — and our standards — high when it comes to LED and service. We leverage the best of technology to meet everyday needs and enable digital transformation. Our promise to you is an unsurpassed first and lasting experience.

NIXEL™ to Pixel Warranty

Your display is engineered to pass the ultimate test: time. We use high-performing materials like gold wiring to ensure your display is a worthwhile investment. Our Warranty coverage starts pixel one ensuring your display is covered 100% from our Atlanta headquarters.

Benefits

Multiple Formats

Maximize design flexibility with both cabinet and frame-and-skin topologies

Environment Agnostic

Create displays in any environment with confidence knowing each cabinet is fully IP65 Rated

High Quality Componentry

Performance series displays are built with high quality components which carry an industry leading 3 year extendable warranty. No small letters, no addendums.

Curveable

Blend your display into the architecture with both flat and curvable designs.

SPECIFICATIONS: PERFORMANCE 500

Pixel Pitch	3.1mm	3.9 mm	5.9 mm	8 mm	10 mm
Module Size	500 x 500 mm / 19.69 x 19.69 in				
Module array per "Full HD"	12 x 7 ²	15 x 8 ²	23 x 13 ²	32 x 18	40 x 22 ²
Module Resolution	160 x 160	128	84 x 84	60 x 60	48 x 48
Module Depth ³	3.75 in / 95.25 mm				
Watts/ft ²	61.34 Max / 18.40 Avg				
Weight/ft ²	7.65 lbs / 3.47 kg				
Max Brightness (standard)	600 nits	550 nits			
Viewing Angle Max ⁴	178° horizontal / 140° vertical				
Viewing Angle L50 ⁴	140° horizontal / 140° vertical				
Curvable	No				
Serviceability	Front				
Indoor/Outdoor	Outdoor				
Input Voltage (VAC)	110 / 120 / 208 / 220 / 240 VAC - Single Phase				
Output Bit Depth ⁵	8-bit Standard (16.7 Million) / Up to 10-bit (>1 Billion)				
Lifetime	>100,000 hours				
AWARE™	Enabled Upon Request				

1 Cabinet/module footprint, standard décor/frame adds 1/2" to overall system height and width 2 This product does not array to exactly 1920x1080



3 Cabinet/module depth, standard décor/frame depth adds 1/8" to overall system depth

4 L50 is objective measured angle at which brightness decreases to 50% of max brightness

5 Performance Series™ LED displays process at up to 14 bits per channel internally. Output Bit Depth is limited by the input bit depth and system design throughout.